

WELCOME TO



**MANUFACTURERS, WHOLESALERS, EXPORTERS, IMPORTERS
OF PHYSIOTHERAPY, OCCUPATIONAL & REHABILITATION
DEPARTMENT EQUIPMENT**

**“Excellence in Equipment, Mastery in Maintenance,
From Purchase to Performance, We’re with you.”**



www.amgadgetsmedcial.com

**OUR PREMIUM PHYSIOTHERAPY
EQUIPMENT RANGE.**



7065616825 , 9818313448

ABOUT US

- **"AMGADGETS Medical Equipment Pvt. Ltd. is a leading provider of high-quality physiotherapy equipment. With a strong commitment to improving patient care, we specialize in supplying state-of-the-art physiotherapy devices designed to support a wide range of therapeutic applications.**
- **Our product portfolio includes a comprehensive selection of physiotherapy equipment, from electrotherapy and exercise equipment to treatment tables and rehabilitation aids. Each product is carefully selected for its performance, reliability, and value, ensuring that our customers receive the best possible equipment for their needs.**
- **At AMGADGETS, we understand the importance of after-sales service. That's why we also offer expert repair and maintenance services to ensure your equipment remains in optimal condition, minimizing downtime and maximizing patient care.**
- **Our mission is to empower healthcare professionals with innovative, effective solutions that enhance patient outcomes and provide a better quality of life. Trust AMGADGETS Medical Equipment Pvt. Ltd. for all your physiotherapy equipment needs. We are more than a supplier; we are a partner in your healthcare journey.**



INDEX

1. AME PREMIUM COMBINATION THERAPY UNIT (IFT+MST+TENS)
MODEL NO: **AME-ETP-001** [LCD]
2. AME PREMIUM COMBINATION THERAPY UNIT (4CHANNEL TENS+ULTRASOUND 1 (MHZ)
MODEL NO: **AME-ETP-002** [DIGITAL]
3. AME PREMIUM MINI ULTRASOUND THERAPY UNIT (1MHZ)
MODEL NO: **AME-ETP-003** [DIGITAL]
4. AME PREMIUM MINI ULTRASOUND THERAPY UNIT (1MHZ)
MODEL NO: **AME-ETP-004** [LCD]
5. AME PREMIUM TABLE TOP ULTRASOUND THERAPY UNIT (HEAVY DUTY) (1MHZ)
MODEL NO: **AME-ETP-017** [LCD]
6. AME PREMIUM TABLE TOP ULTRASOUND THERAPY UNIT WITH DOUBLE HEAD (HEAVY DUTY) (1&3MHZ)
MODEL NO: **AME-ETP-005** [LCD]
7. AME PREMIUM ADVANCED 2 CHANNEL TENS THERAPY UNIT
MODEL NO: **AME-ETP-015** [LCD]
8. AME PREMIUM ADVANCED 4 CHANNEL TENS THERAPY UNIT
MODEL NO: **AME-ETP-007** [DIGITAL]
9. AME PREMIUM ADVANCED 4 CHANNEL TENS THERAPY UNIT
MODEL NO: **AME-ETP-008**[LCD]
10. AME PREMIUM ADVANCED 4 CHANNEL TENS THERAPY UNIT WITH (**BATTERY BACKUP**)
MODEL NO: **AME-ETP-009** [LCD]
11. AME PREMIUM ADVANCED IFT THERAPY UNIT
MODEL NO: **AME-ETP-014** [DIGITAL]
12. AME PREMIUM ADVANCED MUSCLE STIMULATOR THERAPY UNIT
MODEL NO: **AME-ETP-006** [LCD]
13. AME PREMIUM ADVANCED LUMBAR & CERVICAL TRACTION THERAPY UNIT
MODEL NO: **AME-ETP-010** [DIGITAL]
14. AME PREMIUM ADVANCED LUMBAR & CERVICAL TRACTION THERAPY UNIT
MODEL NO: **AME-ETP-011** [LCD]
15. AME PREMIUM ADVANCED LONGWAVE DIATHERMY UNIT
MODEL NO: **AME-ETP-012** [LCD]
16. AME PREMIUM ADVANCED SHORTWAVE DIATHERMY UNIT (500W)
MODEL NO: **AME-ETP-016** [DIGITAL]
17. AME PREMIUM ADVANCED LASER THERAPY UNIT (650NM)
MODEL NO: **AME-ETP-013** [LCD]



AME-ETP-001

AME PREMIUM COMBINATION THERAPY UNIT
(IFT+MST+TENS) [LCD]

APPLICATION : Though interferential currents are classified as low frequency on the basis of their therapeutic effective components, they have specific characteristic properties which distinguish them from any other therapeutic low frequency current. These currents are not actually produced inside the equipment and applied in this form via electrodes, but generated on the patients body in an endogenic way and Relives most of the musculoskeletal Pain.

STANDARD ACCESSORIES :

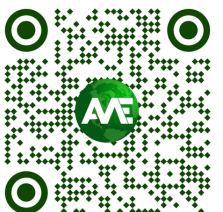
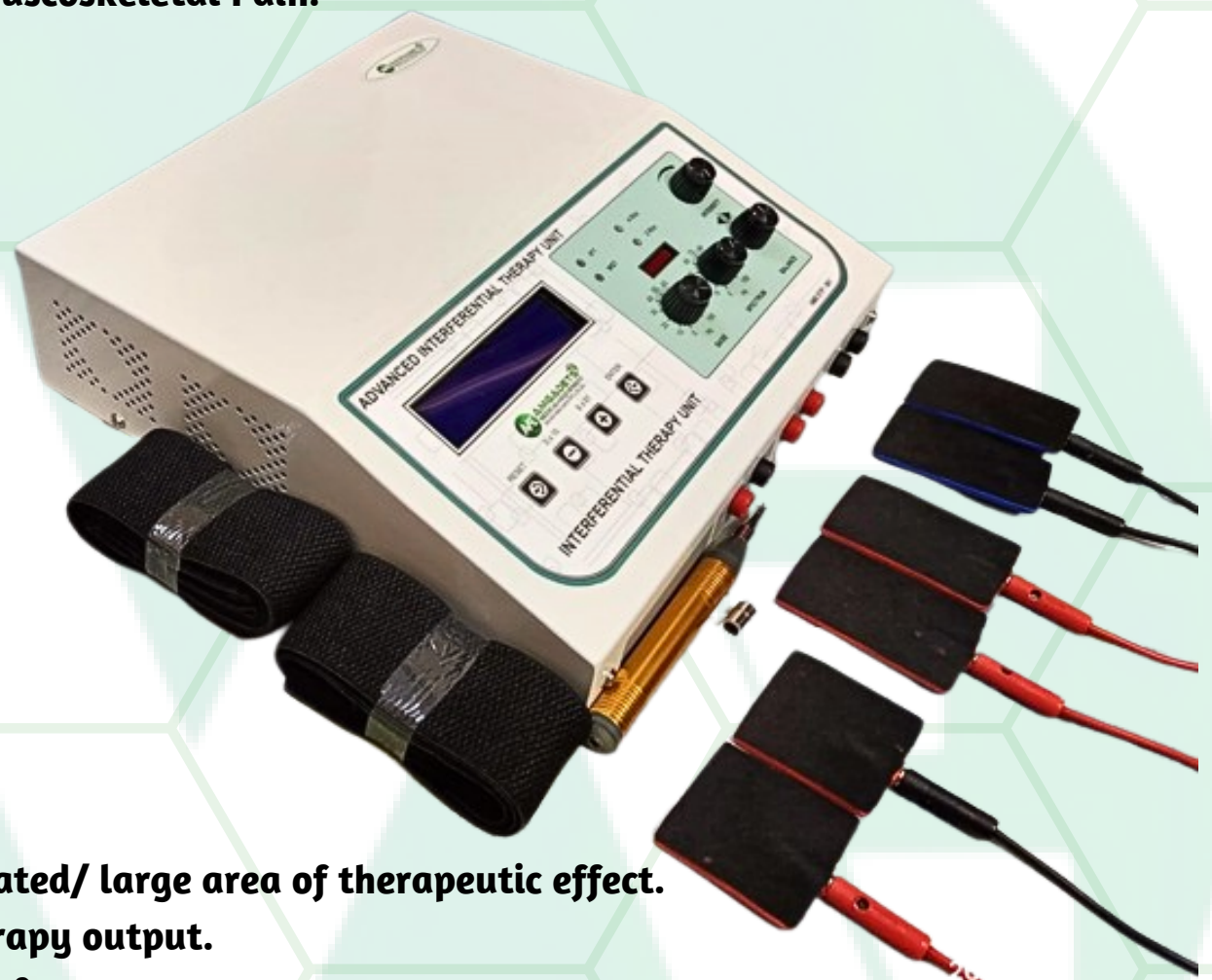
1. Electrodes (Big) : 4 Unit
2. Electrodes (Small) : 2 Unit
3. Electrode's Wire : 3 Pair
4. Velcro Fixations Straps : 2 Sets
5. Pen Electrode set : 1 No.
6. Power Cable : 1 No.

FEATURES :

- 0-60 mA pulse Amplitude.
- 16 X 2 alpha-numeric LCD.
- Soft Feather touch keys.
- Wide range of accessories for concentrated/ large area of therapeutic effect.
- Wide range of parameters for best therapy output.
- Audio buzzer at end of treatment for safety.

TECHNICAL SPECIFICATIONS :

- Output Type : 100% Isolated
- Input voltage - 110/220 v AC 50/60Hz
- Power Usage - 45 Watts
- Output Mode - Continuous / Pulse
- Current Type 1 - Galvanic, Interrupted Galvanic, Surged
- Current Type 2 - Surged Faradic, TENS
- Other Feature - 2 Pole Application
- Output Current - 0-60 mA
- Dimensions - 10 x 7 x 3.5 in.
- Weight - 2 Kg.



AME-ETP-002

AME PREMIUM COMBINATION THERAPY UNIT
(4CHANNEL TENS+ULTRASOUND 1 (MHZ)
[DIGITAL]

APPLICATION:

The AME-ETP-002 Premium Combination Ultrasound + 4channel TENS therapy unit stands out as a distinctive product capable of simultaneously delivering 1 MHz of Ultrasound alongside TENS therapy through four independent output channels. This dual functionality renders it highly preferred among both physiotherapists and individuals, offering the combined advantages of UST and TENS in a single device. Engineered to meet a wide range of clinical needs, this unit is designed for highly effective pain management solutions.



STANDARD ACCESSORIES :

- Rubber Electrodes: 08 No.
- Electrode's Lead: 04 No.
- Velcro Fixation straps: 02 set.
- 1 MHz Applicator: 01 No.
- Mains Lead: 01 No.

FEATURES :

- 90V to 240V AC 50/60Hz operation SMPS supply.
- Four independent TENS output channels.
- 0-80 mA pulse Amplitude on each channel.
- 6 TENS Modes with different frequency selectors.
- 1MHz Ultrasound therapy with digital output.
- 4 different Ultrasound output modes.
- 0-90 Minutes treatment timer.
- Audio buzzer at end of treatment for safety.
- Various Frequencies and Modes to choose from.



TECHNICAL SPECIFICATIONS :

- Input Voltage - 90 to 240 V AC 50/60Hz, SMPS supply
- Num. of Channels - Four Independent Output Channels
- Pulse Amplitude - 0-80 mA/Channel
- Pulse Modes - Continuous, Burst, PWM, Surge, Sweep, Mixed
- Pulse Frequencies - 2Hz, 20Hz, 40Hz, 80Hz, 120Hz, 150Hz
- Timer(max) - 0-90 min
- Emission US freq. - 1 MHz +- 10%
- US Modes - Continuous; Pulse A: 1, 10, 50, 100(Pulses per second);
Pulse B: 1:1, 1:2, 1:4, 1:7 & 1:10; Wave (variable intensity)
- Dimensions - 30 x 24 x 10.2 cm. • Weight - 2.5 Kg.



AME-ETP-003

AME PREMIUM MINI ULTRASOUND THERAPY UNIT
(1MHZ) [DIGITAL]

APPLICATION: Therapeutic ultrasound is a popular choice in physical therapy, prized for its deep heating capabilities that are known to aid in tissue healing and alleviate pain. The AME-ETP-002 MINI has set the benchmark for both professional and personal use in therapeutic ultrasound modalities. With over a decade in the market and ongoing enhancements, this product has earned the trust of our clientele and is endorsed by healthcare professionals worldwide.



STANDARD ACCESSORIES :

- Applicator Probe - 01 Unit
- Applicator Wire - 01 Unit.
- Mains Lead - 01 No.
- Extra fuse - 01 No.



FEATURES :

- Audio buzzer at end of treatment & for safety output control.
- Digital Display for easy input.
- 0-90 Min Timer.
- Light Weight and compact at 2.5 Kg.
- Soft Feather touch keys.
- Bearable amount of heat output optimal for treatment.

TECHNICAL SPECIFICATIONS :

- Input voltage - 110/220 v AC 50/60Hz
- Power Usage - 40 Watts
- Output Mode - Continuous / Pulse
- Max Output Power - 2.5 w/cm² in continuous, 3.5 w/cm² in pulsed
- Emission Frequency - 1 MHz +- 10%
- Dimensions - 8.5 x 7.5 x 3 in.
- Weight - 2.5 Kg.



AME-ETP-004

AME PREMIUM MINI ULTRASOUND THERAPY UNIT
(1MHZ) [LCD]

APPLICATION: A widely used modality in physical therapy for its deep heating benefits, therapeutic ultrasound is said to promote tissue healing and pain relief. AME-ETP-004 LCD, akin to the AME-ETP-003 Mini, represents the gold standard in LCD ultrasound therapy devices. It emits a pure 1 MHz Ultrasound frequency known for its efficacy in managing pain and treating therapeutic conditions, all the while maintaining ease of use and user-friendly operation.



STANDARD ACCESSORIES :

- Applicator Probe - 01 Unit
- Applicator Wire - 01 Unit.
- Mains Lead - 01 No.
- Extra fuse - 01 No.



FEATURES:

- Audio buzzer at end of treatment & for safety output control
- Digital Display for easy input
- 0-90 Min Timer
- Light Weight and compact at 2.5 Kg.
- 16 x 2 alphanumeric LCD display
- Bearable amount of heat output optimal for treatment
- Inbuilt program

TECHNICAL SPECIFICATIONS:

- Input voltage - 110/220 v AC 50/60Hz
- Power Usage - 40 Watts
- Output Mode - Continuous / Pulse
- Max Output Power - 2.5 w/cm2 in continuous, 3.5 w/cm2 in pulsed
- Emission Frequency - 1 MHz +- 10%
- Dimensions - 8.5 x 7.5 x 3 in.
- Weight - 2.5 Kg.



AME-ETP-017

AME PREMIUM TABLE TOP ULTRASOUND THERAPY
UNIT (HEAVY DUTY) (1MHZ)
(LCD)

APPLICATION:

The AME-ETP-017 LCD represents the benchmark in ultrasound therapy, offering the capability to emit 1 MHz frequency directly to the skin. Its superior quality hardware is designed for durability, ensuring the device remains resilient against damage and maintains peak performance over the years. Equipped with a variety of pre-programmed settings, it is tailored to address a wide array of musculoskeletal, inflammatory conditions, and numerous degenerative pathologies.

STANDARD ACCESSORIES :

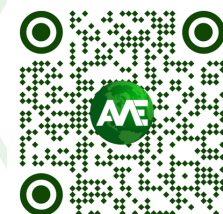
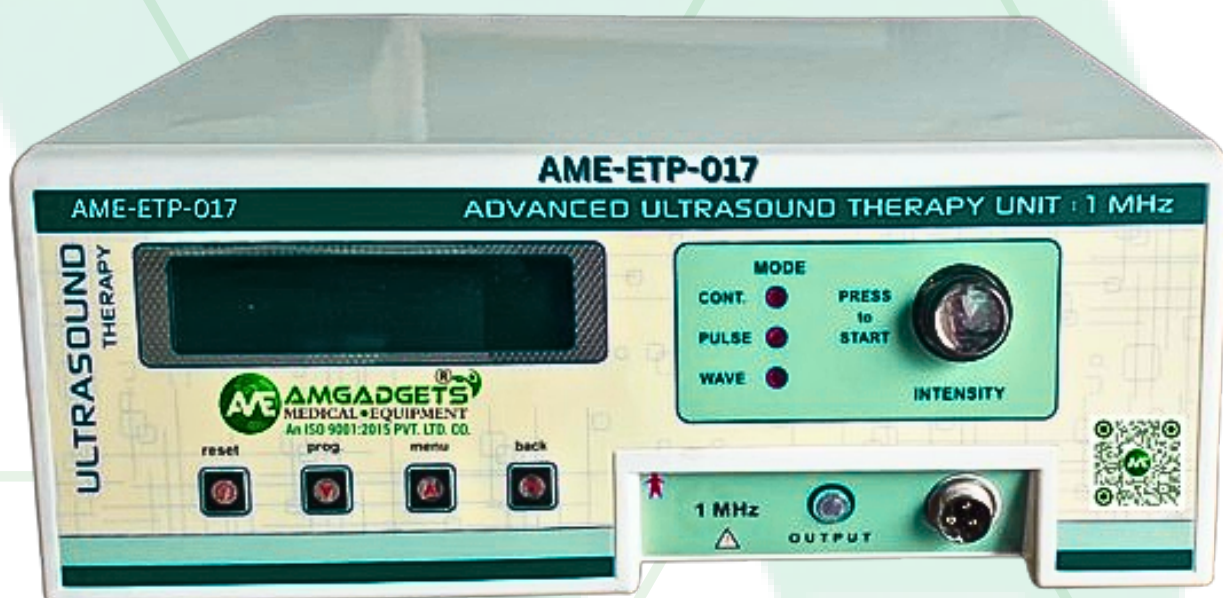
- 1 MHz Applicator Probe: 1 No.
- Applicator Wire - 01 No.
- Mains Cable: 1 No.

FEATURES:

- 1 MHz output channel with indicator.
- Pure 1 MHz ultrasound.
- Machine Error Indicator.
- 0-99 Minutes variable treatment timer.
- 3 Different Modes to choose from
- 30 Inbuilt Programs.
- LCD Display for ease of operation.
- Audio buzzer at end of treatment.
- Professional Ultrasound, made for clinical use.

TECHNICAL SPECIFICATIONS:

- Input Voltage - 110/230v AC, 50/60 Hz +-10%
- Maximum Power - 40 VA
- Treatment Timer - 0-99 min
- Emission Frequency - 1 MHz +- 10%
- Ultrasound Modes - Continuous; Pulse i.e. 1:1, 1:2, 1:4, 1:7 & 1:10; Wave
- Ultrasound Power - 2.5 w/cm2 in continuous mode 3.5 w/cm2 in pulse mode
- Dimensions - 30 x 28 x 16 cm.
- Weight - 3.5 Kg.



AME-ETP-005

AME PREMIUM TABLE TOP ULTRASOUND THERAPY
UNIT WITH DOUBLE HEAD (HEAVY DUTY) (1&3MHZ)
(LCD)

APPLICATION:

The AME-ETP-005 LCD represents the benchmark in ultrasound therapy, offering the capability to emit both 1 and 3 MHz frequencies directly to the skin. Its superior quality hardware is designed for durability, ensuring the device remains resilient against damage and maintains peak performance over the years. Equipped with a variety of pre-programmed settings, it is tailored to address a wide array of musculoskeletal, inflammatory conditions, and numerous degenerative pathologies.

STANDARD ACCESSORIES :

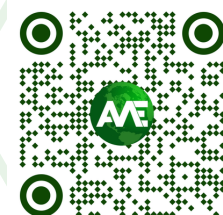
- Main Ultrasound Unit: 1 No.
- 1 MHz Applicator Probe: 1 No.
- 3 MHz Applicator Probe: 1 No.
- Applicator Wire - 02 No.
- Mains Cable: 1 No.

FEATURES:

- 1 MHz and 3 MHz output channels with indicator.
- Pure 1 MHz and 3 MHz ultrasound.
- Machine Error Indicator.
- 0-99 Minutes variable treatment timer.
- 3 Different Modes to choose from.
- 30 Inbuilt Programs.
- LCD Display for ease of operation.
- Audio buzzer at end of treatment.
- Professional Ultrasound, made for clinical use.

TECHNICAL SPECIFICATIONS:

- Input Voltage - 110/230v AC, 50/60 Hz +-10%
- Maximum Power - 40 VA • Treatment Timer - 0-99 min
- Emission Frequency - 1 MHz / 3 MHz +- 10%
- Ultrasound Modes - Continuous; Pulse i.e. 1:1, 1:2, 1:4, 1:7 & 1:10; Wave
- Ultrasound Power - 2.5 w/cm² in continuous mode 3.5 w/cm² in pulse mode
- Dimensions - 30 x 28 x 16 cm.
- Weight - 3.5 Kg.



AME-ETP-015

AME PREMIUM ADVANCED 2 CHANNEL TENS
THERAPY UNIT (LCD)

APPLICATION: Our AME-ETP-015 Dual channel TENS therapy unit is one of the most used pain management systems for most of the Musculo-skeletal/inflammatory painful conditions. Particularly effective in treating arthritis, neurogenic pain, degenerative joints and in facilitating muscle stimulation, our TENS therapy systems are designed to deliver superior management and stimulation across a wide array of therapeutic uses, ensuring efficacy in virtually every application.

STANDARD ACCESSORIES :

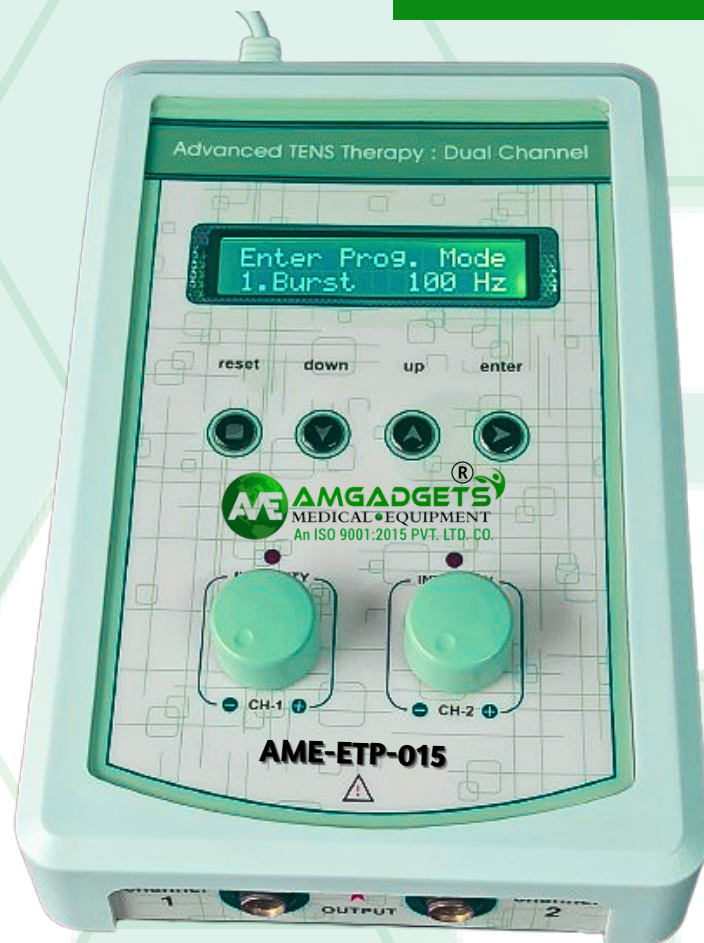
- Rubber Electrodes: 04 Nos.
- Electrode's Lead: 02 Nos.
- Velcro Fixation straps: 01 set.
- Mains Cord: 01 No.

FEATURES:

- Two independent output channels with indicator.
- 0-80 mA pulse Amplitude on each channel.
- 12 different modes/programs of TENS current tackle almost all clinically painful conditions.
- 60 Minutes variable timer.
- LCD display for interactive operation.
- Audio buzzer at end of treatment.
- Light weight for Portability.
- Especially made for personal use.

TECHNICAL SPECIFICATIONS:

- Input Voltage - 90 to 240 V AC 50/60Hz, SMPS supply
- No. of Channels - Two Independent Output Channels
- Waveform - Biphasic Rectangular Balanced Wave
- Pulse Amplitude - 0-80 mA/Channel
- Pulse Width - 100 microsec (except PWM-C & PWM-I Mode)
- Timer(max) - 60 min • Dimensions - 5 x 7.5 x 2.5 in.
- Weight - 1.12 Kg



AME-ETP-007

AME PREMIUM ADVANCED 4 CHANNEL TENS
THERAPY UNIT (DIGITAL)

APPLICATION: This Device represents the digital evolution of the AME-ETP-008 LCD, meeting all the essential therapeutic demands of both patients and medical professionals worldwide. As one of our top-selling products, its benefits are self-evident, making it suitable for both personal and professional use. Offering a comprehensive solution for pain management, this device provides a wide array of modes at a cost-effective price point, making up for the LCD user interface.

STANDARD ACCESSORIES :

- Rubber Electrodes: 08 No.
- Electrode's Lead: 04 No.
- Velcro Fixation straps: 02 set
- Mains Cord: 01 No.

FEATURES:

- Four independent output channels with indicator.
- 0-80 mA pulse Amplitude on each channel.
- 60 Minutes variable treatment timer.
- New "Pulse-Width-Modulation" Mode for better therapy sessions.
- LED display for pulse mode and pulse frequency.
- Audio buzzer at end of treatment & for safety output control.
- Light weight for Portability.

TECHNICAL SPECIFICATIONS:

- Input Voltage - 90 to 240 V AC 50/60Hz, SMPS supply
- Waveform - Biphasic Rectangular Balanced Wave
- Pulse Amplitude - 0-80 mA/Channel
- Pulse Frequencies - 2Hz, 20Hz, 40Hz, 80Hz, 120Hz, 150Hz
- Pulse Modes - Continuous, Burst, Surge, Sweep, Mixed, PWMI(Pulsed Width Modulation-Intermittent), PWM-C(PWM-Continuous),
- Pulse Width - 150 microsec (except PWM-C & PWM-I Mode)
- Timer(max) - 0-60 min
- Dimensions - 23 x 24 x 7.5 cm.
- Weight - 2 Kg.



AME-ETP-008

AME PREMIUM ADVANCED 4 CHANNEL TENS
THERAPY UNIT (LCD)

APPLICATION: The AME-ETP-008 LCD stands as a versatile pain management solution, adept at addressing a broad range of musculoskeletal and inflammatory pain conditions. TENS units are particularly effective in managing arthritis, neurogenic pain, joint degeneration, and in aiding muscle stimulation. Distinguished from more basic models by its advanced functionality this device boasts a variety of modes and superior therapy control options.



STANDARD ACCESSORIES :

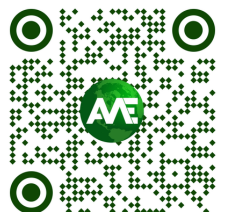
- Rubber Electrodes: 08 No.
- Electrode's Lead: 04 No.
- Velcro Fixation straps: 02 set.
- Mains Cord: 01 No.

FEATURES:

- Four independent output channels with indicator.
- 0-80 mA pulse Amplitude on each channel.
- 60 Minutes timer which can be varied within the control panel.
- New "Pulse-Width-Modulation" Mode.
- 12 Preset Programs to tackle various conditions.
- 6 pulse modes: Continuous, Burst, Sweep, PWM-I, PWM-C, Surge.
- 16x2 LCD Display for easy-to-use interface.
- Audio buzzer at end of treatment.
- In-Use Indicator.

TECHNICAL SPECIFICATIONS:

- Input Voltage - 90 to 240 V AC 50/60Hz, SMPS supply.
- No. of Channels - Four Independent Output Channels.
- Waveform - Biphasic Rectangular Balanced Wave.
- Num. of Programs - 12.
- Pulse Amplitude - 0-80 mA/Channel.
- Pulse Width - 150 microsec (except PWM-C & PWM-I Mode).
- Timer(max) - 60 min.
- Dimensions - 24 x 23.5 x 7 cm.
- Weight - 2 Kg.



AME-ETP-009

AME PREMIUM ADVANCED 4 CHANNEL TENS
THERAPY UNIT WITH (BATTERY BACKUP)
(LCD)

APPLICATION: The latest addition to AMGADGETS'S TENS collection, the AME-ETP-009 LCD, enhances usability for healthcare professionals, ensuring uninterrupted therapy sessions for , even in the event of a power outage. Crafted for professional settings as a high-end offering, this comprehensive pain management system features a variety of modes and programs, adeptly addressing every painful condition without any compromises.

STANDARD ACCESSORIES :

- Rubber Electrodes: 08 No.
- Electrode's Lead: 04 No.
- Velcro Fixation straps: 02 set.
- Mains Cord: 01 No.
- Extra fuse - 01 No.

FEATURES:

- Four independent output channels with indicator.
- 0-80 mA pulse Amplitude on each channel.
- SMPS Supply - Works between 90 to 270 volts.
- Frequency selection from 0-250 Hz.
- Pulse Width selection from 100-250 micro-sec.
- 5 Pulse modes: Cont., Sweep, Pulsed, Burst, PWM.
- 128X64 Graphic LCD for ease of use.
- 50 inbuilt programs for most musculoskeletal cond.
- 5 user defined: storable programs.
- Battery Backup which lasts up-to 180 min.

TECHNICAL SPECIFICATIONS:

- Input Voltage - 90 to 240 V AC 50/60Hz, SMPS supply
- Waveform - Biphasic Rectangular Balanced Wave
- Pulse Amplitude - 0-80 mA/Channel
- Pulse Frequencies - 0-250Hz
- Pulse Modes - Continuous, Burst, Surge, Sweep, Mixed
- Pulse Width - 100 - 250 microsec
- Num. of Programs - 45 Inbuilt + 5 User Defined
- Timer(max) - 0-90 min • Dimensions - 24 x 27 x 9 cm.
- Weight - 4 Kg.



AME-ETP-014

AME PREMIUM ADVANCED IFT THERAPY UNIT
(DIGITAL)

APPLICATION: Introducing our latest innovation in AMGADGETS's IFT series, the AME-ETP-014 is designed to administer Interferential currents across a range of modes and frequencies, unlocking benefits not achievable with other therapy forms. Crafted for both individual and clinical settings, this all-encompassing pain management system ensures comprehensive treatment of various pain conditions without any compromise.

STANDARD ACCESSORIES :

- Rubber Electrodes: 08 No.
- Electrode's Lead: 04 No.
- Velcro Fixation straps: 02 set.
- Mains Cord: 01 No.
- Extra fuse : 01 No

FEATURES:

- High cost of interferential Therapy can be cut in half by our AME-ETP-014.
- Both 2KHz and 4KHz Frequencies available
- Three types of Sweep Patterns
- Three types of Treatment Modes
- Four Types of Beat Modes available
- 29 Inbuilt Programs and one manual mode.

TECHNICAL SPECIFICATIONS:

- Input Voltage - 110/230v AC 50/60 Hz, 1.5 Amps Current
- Output Type - 100% Isolated
- Carrier Frequency - 4KHz and 2KHz
- No. of Programs - 0 - 29 (total 30 programs; prog. 0 is manual mode)
- Output Channel - Channel 1 (RED): Constant Carrier Frequency
Channel 2 (BLACK): Variable Carrier Frequency
- Output Current - 0-70 mA • Beat Frequency - 0 - 150 Hz
- Scan Programs - 0-150 sec, 80-150 sec, 0-10 sec, & 0-150 cont.
- Scan Patterns - Rectangular, Trapezoidal, Triangular
- Therapy Modes - 2 Pole Pre-Modulated Interferential Therapy
4 Pole Classic Interferential Therapy
4 Pole 45° vector Interferential Therapy
- Timer - 0 - 99 min



AME-ETP-006

AME PREMIUM ADVANCED MUSCLE STIMULATOR
THERAPY UNIT (LCD)

APPLICATION: This next generation computerized muscle stimulator unit is designed to accommodate a wide range of clinical needs offering efficient solutions for various musculoskeletal and inflammatory conditions, including degenerative diseases. Its integrated digital cut-off timer adds to the precision and convenience of treatments. Furthermore, the alphanumeric LCD ensures that the device is user-friendly and straightforward to operate. While muscle stimulation can become complex, the comprehensive instruction manual provided ensures all aspects of the machine are clearly explained and accessible.

STANDARD ACCESSORIES :

- Rubber Electrodes (Large) - 01 Set
- Rubber Electrodes (Small) - 01 Set
- Electrode's Lead - 01 Nos.
- Velcro Fixation straps - 02 Sets
- Metal pen electrode - 01 Set (with pin & ball attachment)
- Mains Lead - 01 No.

FEATURES:

- 0-60 mA pulse Amplitude
- 16 X 2 alpha-numeric LCD
- Soft Feather touch keys
- Wide range of accessories for concentrated/ large area of therapeutic effect.
- Wide range of parameters for best therapy output.
- Audio buzzer at end of treatment for safety.

TECHNICAL SPECIFICATIONS:

- Input voltage - 110/220 v AC 50/60Hz
- Power Usage - 45 Watts
- Output Mode - Continuous / Pulse
- Current Type 1 - Galvanic, Interrupted Galvanic, Surged
- Current Type 2 - Surged Faradic, TENS
- Other Feature - 2 Pole Application
- Output Current - 0-60 mA
- Dimensions - 10 x 7 x 3.5 in.
- Weight - 2 Kg.



AME-ETP-010

AME PREMIUM ADVANCED LUMBAR & CERVICAL
TRACTION THERAPY UNIT (DIGITAL)

APPLICATION: The AME-ETP-010 Digital is a premier lumbar and cervical traction therapy unit, widely utilized in clinical settings and by physiotherapy experts. This device features a built-in treatment timer and is equipped with a high-torque AC motor alongside a jerk-free gear system, ensuring seamless traction and release. Our commitment to safety is reflected in the design of this unit; it includes a patient-operated switch, allowing for immediate release during therapy should any discomfort arise.

STANDARD ACCESSORIES :

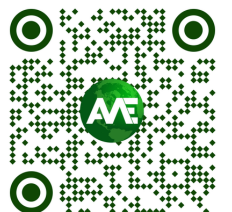
- Cervical collar: 1 No.
- Spreader Bar: 1 No.
- Pelvic Belt: 1 No.
- Thoracic Belt: 1 No.
- Traction force Doublers: 1 No.
- Patient Remote Switch: 1 No.

FEATURES:

- Wide range of force selection by control switch.
- Static, intermittent and harmonic traction modes.
- The cervical and lumbar mode makes it convenient for regressive and progressive treatment.
- Intermittent traction forces applying with traction pull and relax application.
- Facility to release the applied force if the treatment time is over and buzzer is triggered.
- A patient switch is provided which can release the applied force if any uncomfortable sensations arise.

TECHNICAL SPECIFICATIONS:

- Input voltage - 110/220 v AC 50/60Hz.
- Treatment Timer(max) - 0-99 Min.
- Traction Force Cervical - 5, 6, 8, 10, 12, 15 Kg.
- Traction Force Lumbar - 20, 25, 30, 35, 40, 45 Kg.
- Force with Double Pulley - 10-90 Kg.
- Modes of Treatment - Static, Intermittent.
- Hold Time - 10, 20, 30, 40, 60, 80 Seconds.
- Rest Time - 1, 5, 10, 15, 20, 30 Seconds.
- Dimensions - 12 x 12 x 11.5 in. • Weight - 14 Kg.



AME-ETP-011

AME PREMIUM ADVANCED LUMBAR & CERVICAL
TRACTION THERAPY UNIT (LCD)

APPLICATION: The AME-ETP-010 Digital is a premier lumbar and cervical traction therapy unit, widely utilized in clinical settings and by physiotherapy experts. This device features a built-in treatment timer and is equipped with a high-torque AC motor alongside a jerk-free gear system, ensuring seamless traction and release. Our commitment to safety is reflected in the design of this unit; it includes a patient-operated switch, allowing for immediate release during therapy should any discomfort arise.

STANDARD ACCESSORIES :

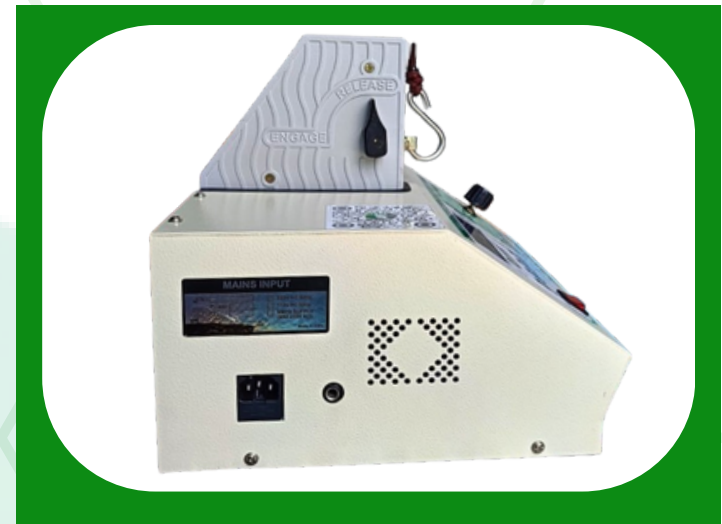
- Cervical collar: 1 No.
- Spreader Bar: 1 No.
- Pelvic Belt: 1 No.
- Thoracic Belt: 1 No.
- Traction force Doublers: 1 No.
- Patient Remote Switch: 1 No.

FEATURES:

- Wide range of force selection by control switch.
- Static, intermittent and harmonic traction modes.
- The cervical and lumbar mode makes it convenient for regressive and progressive treatment.
- Intermittent traction forces applying with traction pull and relax application.
- Facility to release the applied force if the treatment time is over and buzzer is triggered.
- A patient switch is provided which can release the applied force if any uncomfortable sensations arise.

TECHNICAL SPECIFICATIONS:

- Input voltage - 110/220 v AC 50/60Hz.
- Treatment Timer(max) - 0-99 Min.
- Traction Force Cervical - 5, 6, 8, 10, 12, 15 Kg.
- Traction Force Lumbar - 20, 25, 30, 35, 40, 45 Kg.
- Force with Double Pulley - 10-90 Kg.
- Modes of Treatment - Static, Intermittent.
- Hold Time - 10, 20, 30, 40, 60, 80 Seconds.
- Rest Time - 1, 5, 10, 15, 20, 30 Seconds.
- Dimensions - 12 x 12 x 11.5 in. • Weight - 14 Kg.



AME-ETP-012

AME PREMIUM ADVANCED LONGWAVE DIATHERMY
UNIT (LCD)

APPLICATION: The LONGWAVE THERAPY unit, governed by microcomputer technology, is designed for pain management and employs electromagnetic waves to address a range of conditions. Utilizing the capacitor field technique, this device operates with a 1.0 MHz high frequency alternating current (AC), incorporating the patient's own tissue into the capacitor's function. This equipment is specifically intended for use by trained professionals in fields such as physiotherapy, rehabilitation, or related disciplines.



STANDARD ACCESSORIES :

- Active Probes: 3 (Different disc sizes)
- Inactive probe: 1 (with Patient switch)
- Power Cord - 1 Unit
- Coupling gel bottle - 1 Unit

FEATURES:

- Four independent output channels with indicator
- 0-80 mA pulse Amplitude on each channel
- 0-90 Minutes variable treatment timer
- Various Frequencies and Modes to choose from
- LED display for pulse mode and pulse frequency.
- Audio buzzer at end of treatment
- Light weight for Portability



TECHNICAL SPECIFICATIONS:

- Input Voltage - 220/110 Volts AC; 50/60 Hz +-10%
- Wavelength - 300 meters
- Emission Frequency - 1 MHz +- 10%
- Power - Digitally Controlled 21 steps variable
- Treatment Timer - 0 To 60 Min
- Display Type - 128 x 64 Graphic LCD Display
- Weight - 4 Kg.
- Size - 30 x 28 x 12 cm



AME-ETP-012

AME PREMIUM ADVANCED SHORTWAVE DIATHERMY
UNIT (500W) (DIGITAL)

APPLICATION: Our AME-ETP-012 Shortwave therapy is the application of electrical energy in an electromagnetic field, which generates heat. The Heat can reach the deeper layer of the body, thereby contributing to improved circulation, and improved discharge of waste products, relaxation and pain relief.

STANDARD ACCESSORIES :

- Output wires - 2 Unit.
- SWD Pads - 2 Unit.
- Power Cord - 1 Unit.
- Extra fuse - 1 Unit.
- Disc Electrodes- 2 Unit. (Optional)
- Electrode arms- 2 Unit. (Optional)

FEATURES :

- Shortwave 500 W is a heavy duty medical machine to use in hospitals and busy clinics. It is mounted in heavy duty castors wheel to move place to place. Digital timer for setting the treatment time according to the patients requirements.

TECHNICAL SPECIFICATIONS:

- 500W continuous maximum power outputs
- Operational Mode : Continuous
- Back-lit display with clear operational information.
- On screen simplicity for quick setup.
- Distinctive ergonomic design with rugged, lockable castors.
- Frequencies: 27.12Mhz
- Timer: Digital (0-99) minutes treatment time.
- Wave length : 11 Meters
- Power Source : Triode Valve
- Weight : 40 Kgs. Dimension : HxWxL -90x46x43
- CM Power : 220-240 V, 50/60 HzV



AME-ETP-013

AME PREMIUM ADVANCED LASER THERAPY
UNIT (650NM)

APPLICATION: Low Level Laser Therapy (LLLT) is a non-invasive treatment that uses LEDs producing low level laser between the wavelength of 600 - 1000 nm. Our AME-ETP-013 Laser Therapy Unit delivers 685nm wavelength laser for applications such as pain management, Inflammation, Injury healing, Arthritis Relief, Wound Healing, Neuropathy etc. Additionally, the unit comes equipped with a laser tester to verify the intensity of the laser being emitted.



STANDARD ACCESSORIES :

- LASER Probe: 01 No.
- Safety Goggles: 01 No.
- Key Pair: 01 set
- Mains Power Cord: 01 No.

FEATURES:

- User-friendly menu driven operation system.
- Coherent light at the RED wavelength of 685 nm.
- Control Panel has 128x64 graphic panel (LCD).
- Sensor cap to test the laser power in (mw).
- 59 inbuilt programs for various Neurological, Dermatological and Physiological conditions.
- Key operation makes it safe for usage in clinics which require a practitioner to give a therapy.

TECHNICAL SPECIFICATIONS:

- Input Voltage - 90 to 240 V AC 50/60Hz, SMPS supply
- LASER Beam Class - 3B
- LASER Type - Semiconductor Gas
- Operation Modes - Continuous; Pulse up to 5 KHZ
- Wavelength - 685 nm
- Maximum Power - 100 mW
- Power Density - 0.20 w/cm²
- Max Energy (within 1 min)- 3.0 joule
- Beam Surface - 0.10 cm²
- Num. of programs - 59
- Dimensions - 23 x 24 x 7.5 cm.
- Weight - 2 Kg.



CONNECT WITH US ON SOCIAL MEDIA



www.amgadgetsmedical.com

Google

www.amgadgetsmedical.com

Google Search I'm Feeling Lucky

f **AMGADGETS MEDICAL EQUIPMENT PVT.LTD.**

i **AMGADGETS_MEDICAL**

@AMGADGETS_MEDICAL **AMGADGETS MEDICAL EQUIPMENT PVT.LTD.**

7065616825,9818313448

AMGADGETS MEDICAL EQUIPMENT PVT.LTD.

4.6 ★★★★★
Physiotherapy equip supplier in Delhi

Manage your Business Profile

Hear about this place

AMGADGETS ...

ashish kumar shahabad
★★★★★ 12 hours ago
Providing best services.. I am satisfied with them .. highly recommended..

AMGADGETS MEDICAL EQUIPMENT PVT.LTD. (owner)
11 hours ago
So kind of you for your kind review

Pooja Singh
★★★★★ 12 hours ago
Services are very good and recieve Every item we order is very good quality and updated every things

AMGADGETS MEDICAL EQUIPMENT PVT.LTD. (owner)
11 hours ago
Thank you very much for your kind review.

Pooja Sharma
★★★★★ 10 months ago
I think best equipment suppliers they are and their services are also excellent i bought number of equipment in last few years from them

AMGADGETS MEDICAL EQUIPMENT ...
4 months ago
Thanks you very much for your kind appreciation.

Himi Sharma
1 review
★★★★★ 3 days ago
How kind they are, repaired my existing equipment on a single call. Very cooperative.. highly recommended

Manoj Tiwari
1 review
★★★★★ 3 days ago
Providing quality equipment, using their equipment from last 6 years. Trustworthy

AMGADGETS MEDICAL EQUIPMENT ...
Today
Dear Sir,
Thank you for your 5-star review! We're glad to know you had a positive experience with us. We're al... more

Shruti Raj
10 reviews in Delhi
★★★★★ 11 minutes ago
Good products and good behaviour of the staff with awesome servicing

AMGADGETS MEDICAL EQUIPMENT ...
Today
Dear Madam, Thank you for your 5-star review! We're glad to know you had a positive experience with us.

TERMS & CONDITIONS

VALIDITY OF OFFER

60 Days from the date of Performa Invoice.

DELIVERY

Within 8-12 Weeks from the date of receipt of confirmed supply order.

WARRANTY

We guarantee the soundness of new equipment to be delivered by us / dispatched by our principals for a period of 12 Months, which means that during the said period we are obliged to rectify demonstrable defects in construction and materials used. Such defects are to be notified to us as soon as possible after delivery, upon which we will arrange to repair or replace the relevant components. The warranty excludes the following: A) Defects arising on account of improper handling /accidental damage/ breakages. B) Consumables like Electrodes, Cables, Connectors, Cuffs, Needles, Probes, Batteries, Rubber Parts, CRT Monitors, El Displays, and X-Ray Tubes etc.

PAYMENT DETAILS

90% Advance along with the purchase order through Cheque/Demand Draft in favor of M/s (AMGADGETS MEDICAL EQUIPMENT PRIVATE LIMITED) Payable at New Delhi.

BANK DETAILS OF COMPANY

Bank name : Indian Bank Najafgarh Sainik Enclave Maksudabad, Najafgarh New Delhi -110043.

Account name of company : Amgadgets Medical Equipment Private Limited.

Account number : CA 6547231647

IFSC Code : IDIB000N137

INSTALLATION :At the time of delivery of the product.

AMGADGETS MEDICAL EQUIPMENT PRIVATE LIMITED Shall provide installation, commissioning and demonstration of the equipment for additional consideration of Rs. Nil.

G.S.T. (GSTIN no.) 07AAPCA5257R1ZT

Extra as applicable.

OTHER CENTRAL / STATE GOVT. LEVIES

Relevant exemption certificates to be provided or else shall be charged extra at actual.

ANNUAL MAINTENANCE CONTRACT CHARGES (WITHOUT SPARES, LABOUR ONLY) AFTER WARRANTY

Shall be charged @ 3% of F.O.R. value of the equipment subject to minimum of Rs.10000/- with an Annual escalation @10% per annum, whichever is higher. Service Tax as applicable shall be charged extra on AMC amount. Current rate of Service Tax is 15%. Freight Shall be charged extra as per actual.

Note

All disputes subject to Delhi Jurisdiction only. Goods once sold will not be returned. Specifications & features are subject to change without prior notice.



Authorized Signatory

HIMANSHU BHARDWAJ

(SENIOR.ASST. DIRECTOR MKT.)

Email: amgadgetsmedical2017@gmail.com, padamsharma2009@gmail.com

7065616825, 9818313448





**Thank You for Choosing Amgadgets Medical Equipment Pvt. Ltd.
Dear Valued Customer,**

On behalf of Amgadgets Medical Equipment Pvt. Ltd. , we would like to extend our sincerest gratitude for choosing our catalogue for your physiotherapy equipment needs. We are thrilled to be able to serve you in your pursuit of providing the best care for your patients.

At Amgadgets medical ,we understand the importance of quality, reliability, and innovation when it comes to physiotherapy equipment. Our commitment to excellence drives us to continually source the most advanced and effective products available on the market. We are confident that our catalogue offers a comprehensive range of equipment that meets your requirements and exceeds your expectations.

We are dedicated to providing exceptional customer service and support throughout your experience with us. If you have any questions, concerns, or feedback, please do not hesitate to reach out to our friendly and knowledgeable team. We are here to assist you every step of the way.

Once again, thank you for choosing Amgadgets Medical Equipment Pvt. Ltd., We look forward to being your trusted partner in enhancing the quality of care you provide to your patients.

Best Regards,

[Himanshu Bhardwaj]

[Senior Asst. Director]

[AMGADGETS MEDICAL EQUIPMENT PVT. LTD.]

[7065616825,9818313448]

